

2553A Precision DC Calibrator

Firmware Update Procedure

【Introduction】

This is the procedure to update the firmware of the 2553A Precision DC Calibrator.
Please be sure to follow this procedure to update the firmware.

【Preparation】

USB driver installation

The firmware update tool works on the PC connected to the 2553A via a USB cable.
Therefore, it is necessary to install Yokogawa's USB driver (YKMUSB) into the PC.
Please download the driver from Yokogawa's web site and install it.

Firmware Update Tool

After you decompressed the firmware update file, you will find the files as below.

BootloaderDownloadApp.exe	(The Firmware Update Tool)
BootloaderDownloadApp.ini	(Configuration file)
bootload.dll,tmctl.dll,YKMUSB.dll	(DLL files)
2553A.firm	(A firmware data file of the 2553A)
2553AUpdateIM_EN.pdf	(Update Procedure Manual (This document))

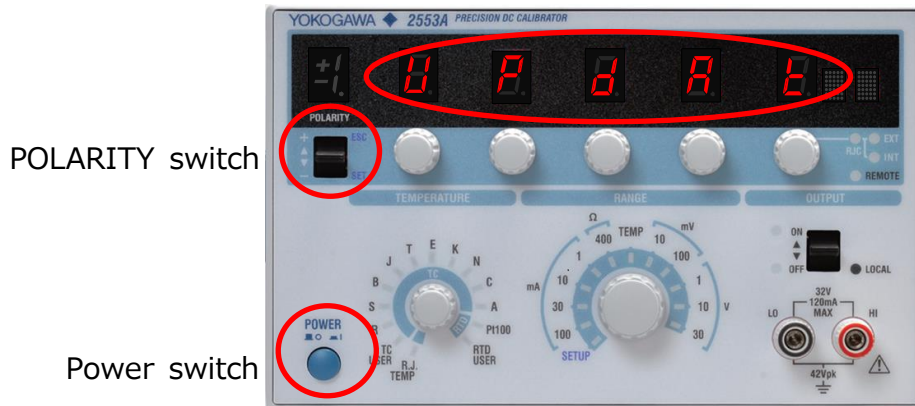
Before start to update the firmware

After it is updated, the settings of the 2553A are all initialized. If necessary, write the settings down.

[Procedure to update the firmware]

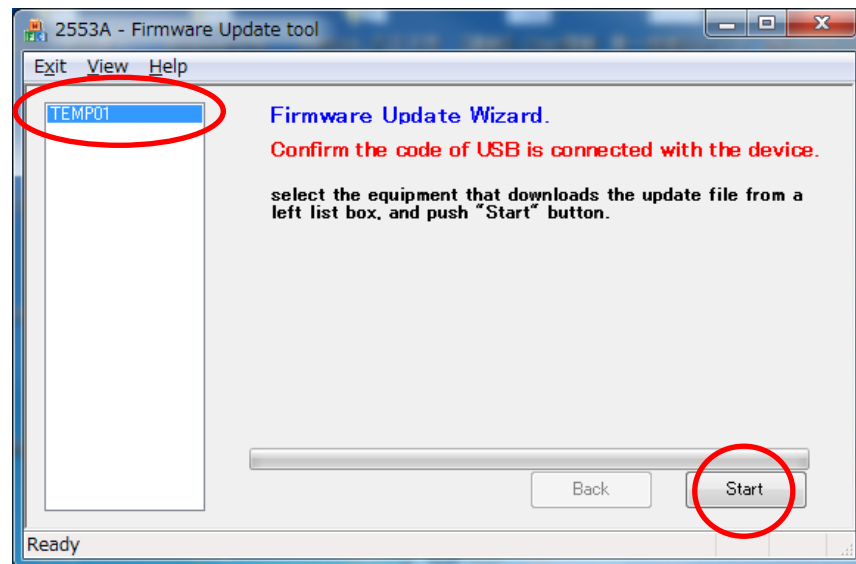
Operation of the 2553A

1. Connect the 2553A and the PC via a USB cable using the USB port on the rear panel of the 2553A.
2. Turn the power switch of the 2553A on while flipping the POLARITY switch up. Until the 2553A displays "UPDAT" as below, you must keep flipping the switch up.

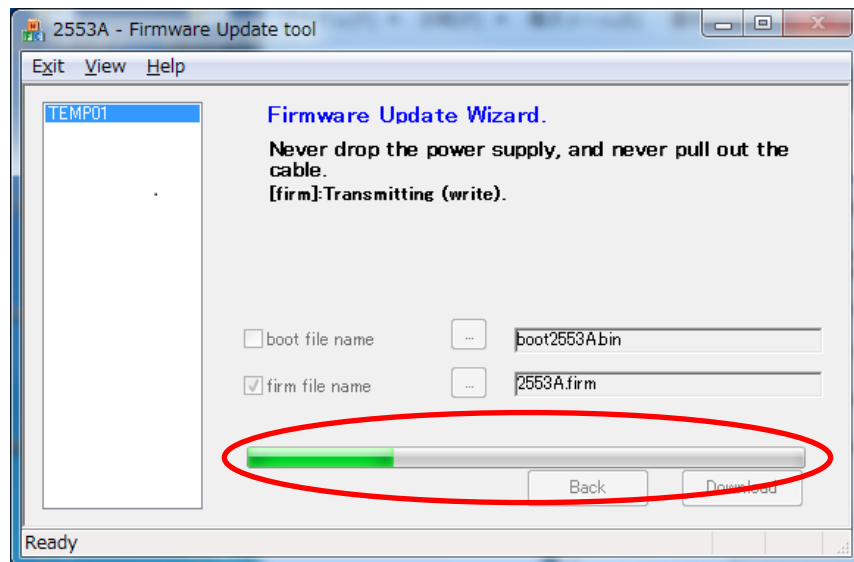


Operation of the Firmware Update Tool (BootloaderDownloadApp)

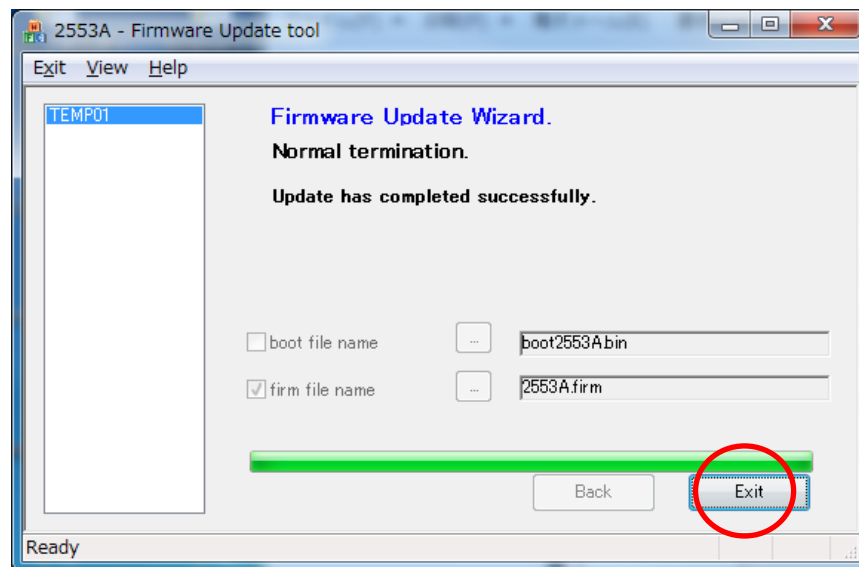
3. Open the "BootloaderDownloadApp.exe". The dialog will be shown.
4. Confirm the display of "TEMP01" on the left side of the dialog and click "Start" button to start the update procedure.



5. The progress bar shows the progress of the update.
Do not pull the USB cable out, and do not turn the power switch off until the update was finished.



6. After it finished the update normally, the dialog below will be shown. To close the dialog, click the "Exit" button.



Reboot the 2553A and confirmation of the firmware version

7. Turn the power switch of the 2553A off once, and then turn on.
After update, the first power on process will take approx. 20 seconds. Please wait until the 2553A can be operated.
Confirm the firmware version by the menu as below.
[SETUP] → "inFo" → "Firm"